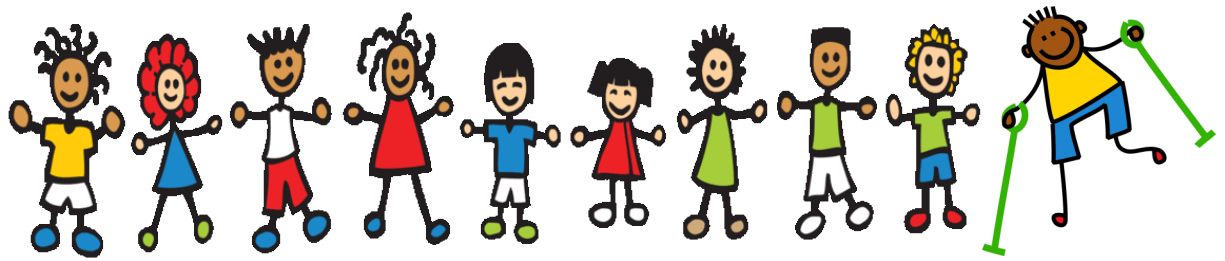


# Wee ALL Play



Drop in for unstructured play and discovery in the Story Room. Caregivers and little ones can interact with toys and books to support your child's learning and development. Adaptive toys for children with low vision, motor difficulties and/or other special needs will also be included.



**Wednesdays**

**10 - 11 a.m.**

**September 12—December 5**



Please contact us if you require any additional accommodations.

**For children of ALL abilities,  
newborn to 3 years, and their  
caregivers**

