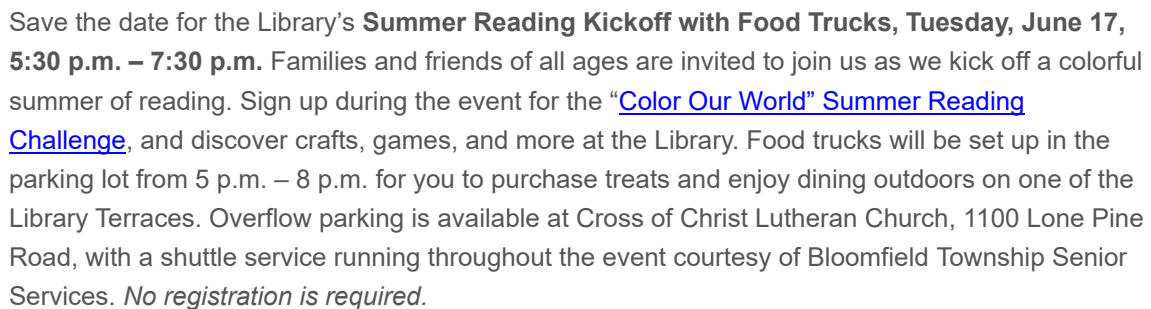
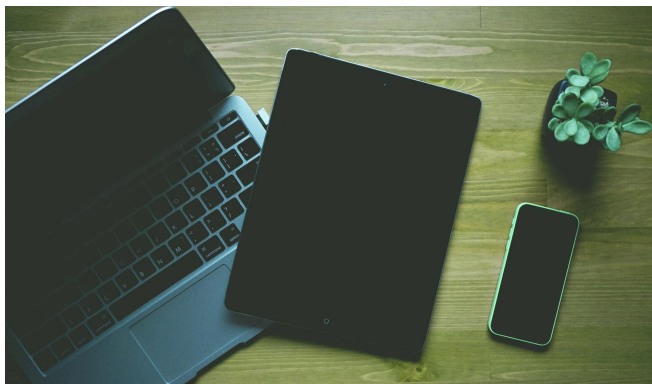


Discover Newsletter



The Catherine Filene Shouse Chamber Music Institute, led by Philip Setzer, provides a platform for emerging professional ensembles. Artistic Encounters are public coachings for Shouse Institute fellows, and all are invited to attend for a behind-the-scenes look at what it takes to be a professional musician. Artistic Encounters are intended for an adult audience. Sponsored by Barbara Solms.

Spring Programs @ the Library for Adults and Teens



Did you know the Library offers **tech classes**? Check out some of the upcoming options and register today!

[Microsoft Excel I](#)

Tuesday, May 20, 5:30 p.m.

Registration is required. Learn basic spreadsheet skills and explore in-depth online Excel courses and topics.

[Google Apps](#), Wednesday, May 21, 5:30 p.m.

Registration is required. Google Apps seamlessly and securely brings together your documents, photos, sheets, and calendar. This class has tips, resources, inspiration, and help links for each app. A Google account is required.

[Microsoft Excel II](#), Tuesday, May 27, 5:30 p.m.

Registration is required. Take a deeper dive into Excel. Learn about filters, pivot tables, v-look-up, and more. Excel I or previous experience with Excel required.

[Computer and Internet Basics](#), Wednesday, May 28, 5:30 p.m.

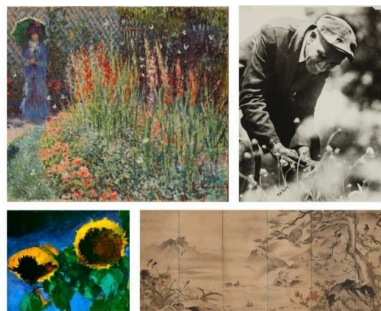
Registration is required. Learn the ins and outs of your PC computer and internet browsers, from file organization to recovering passwords.

[Don't Get Scammed!](#), Monday, June 2, 5:30 p.m.

Registration is required. Recognizing the common signs of a scam could help you avoid becoming a victim of one. IT staff will help you learn what to look for.



**Behind
the Seen:
In the Garden**



[DIA Behind the Seen: In the Garden](#)

Wednesday, June 11, 7 p.m.

Registration is required.

Explore the hidden meanings behind a selection of the masterful images of flowers, plants, and gardens featured in works from the Detroit Institute of Arts collection.

Youth Drop-In Events



[Make a Paper Airplane for National Paper Airplane Day](#)

Saturday, May 24, 11 a.m. – 4 p.m.

No registration is required. Drop in the Youth Room to make a paper airplane for National Paper Airplane Day. We will supply the paper, example designs, and the “runway” – you supply the creativity. For all ages.

[Brick Builders: Dream Summer Vacation](#)

Thursday, May 29, 6:30 p.m.

No registration is required. Junior architects, ages 6 and up, are invited to join us for building fun with LEGO bricks. Create your own masterpiece or do a theme building challenge with your friends.



UPCOMING EVENTS



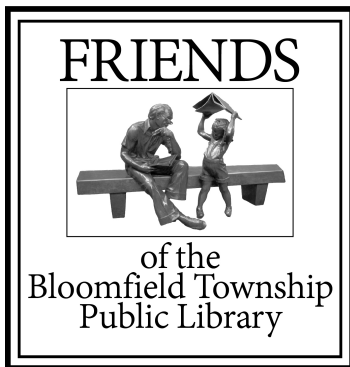
Visit our [Calendar of Events](#) for upcoming programs at the Library including:

- [Fiber Arts Club](#), every month on the first and third Tuesday, 10 a.m. – 12 noon
- [Tots and Friends Playtime](#), Fridays, 10 a.m. – 12 noon
- [English Language Conversation Group](#), Fridays, 10 a.m. – 12 noon
- [“Fade to Black” Romance/Romantasy Book Club](#) – *Heir* by Sabaa Tahir, Friday, May 23, 4 p.m.
- [Movie Discussion Club](#) – *Happy-Go-Lucky* (2008) directed by Mike Leigh, Tuesday, June 3, 7 p.m.
- [Pages Across Nations: An International Book Club](#) – *The Bleeding Stone* by Ibbrahim Al-Koni, Wednesday, June 4, 7 p.m.





Applications for the **Jeanette P. Myers Memorial Scholarship** are being accepted now through Sunday, June 1, 2025. The Myers Memorial Scholarship provides funds to support the post-secondary education of past or present employees of Bloomfield Township Public Library or their families, Library volunteers, or Library cardholders. Scholarship guidelines and application forms are available at the Library's Welcome Desk and [on the Library's website](#). A total amount of up to \$500 will be awarded to one or more scholarship applicants to use for books, tuition, or other relevant expenses to assist in working toward an associate, bachelor, or graduate degree, or for the pursuit of other higher education.



Friends of the Library

The Friends of the Library will hold their next **Second Saturday Sale**, Saturday, June 14, from 11 a.m. – 3 p.m., with a members-only sale period from 10 a.m. – 11 a.m. ([memberships available](#) at the door). Bring a bag or box for your purchase. Donations are also being accepted in the Book Donation Room on the west end of the building during the Library's open hours. For the most up-to-date Friends information, please visit the [library's website](#), or the Friend's [Facebook](#) or [Instagram](#) pages.

Library Hours

Mon. - Thurs.: 9:30 a.m. - 9 p.m.
Friday: 9:30 a.m. - 6:30 p.m.
Saturday: 9:30 a.m. - 5:30 p.m.
Sunday: Noon - 5:30 p.m.

Holiday Closings

The Library will be closed Sunday, May 25, and Monday, May 26, in observance of Memorial Day.

Library Board

Keith Carduner
Danielle Gillman
Judy Lindstrom
Joan Luksik
Joy Murray
Shane Spradlin



Bloomfield Township Public Library
1099 Lone Pine Road
Bloomfield Township, MI 48302
Phone: (248) 642-5800
www.btpl.org