

JUNE 2025



Families and friends of all ages are invited to join us for the Library's **Summer Reading Kickoff with Food Trucks**, Tuesday, June 17, 5:30 p.m. – 7:30 p.m. During the event, sign up for the ["Color Our World" Summer Reading Challenge](#), and discover crafts, games, and more at the Library. Food trucks will be set up in the parking lot from 5 p.m. – 8 p.m. for you to purchase treats and enjoy dining outdoors on one of the Library Terraces. Overflow parking is available at Cross of Christ Lutheran Church, 1100 Lone Pine Road, with a shuttle service running throughout the event courtesy of Bloomfield Township Senior Services. *No registration is required.*

Color Our World with Music

**GEMILY
IN CONCERT**

A photograph of three musicians performing. On the left, a man in a dark shirt and tie plays an acoustic guitar. In the center, a woman in a blue dress plays a violin. On the right, a man in a blue shirt and red beret plays a mandolin. They are all smiling and looking towards the camera. The background shows a window with a view of trees.

[Color Our World with Music:](#)
[Gemily in Concert](#)

Thursday, June 26

6:30 p.m. – 7:30 p.m.

Registration is required. Young and old alike are invited to celebrate the warmth of family life through music, stories, and song with Gemily, featuring Gemini (twin brothers San and Laz) and San's daughter Emily. This vibrant concert blends award-winning originals and folk songs from around the globe, brought to life with more than a dozen instruments – from guitar and fiddle to pan pipes, spoons, and more!

Events @ the Library for Adults and Teens



Behind the Seen: In the Garden



[DIA Behind the Seen: In the Garden](#)

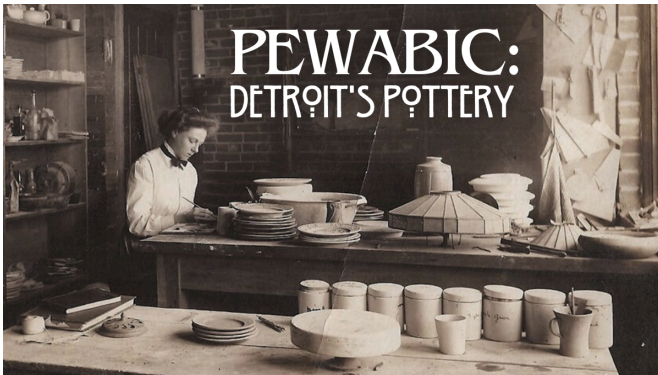
Wednesday, June 11, 7 p.m.

Registration is required. Explore the hidden meanings behind a selection of the masterful images of flowers, plants, and gardens featured in works from the Detroit Institute of Arts collection. Presented by longtime DIA docent Susan Moiseev.

[Teen Riddle Duck Hunt and Duck Dash](#)

Wednesday, June 25, 3 p.m. – 4 p.m.

Registration is required. Figure out the clues then dash through the Library searching for ducks to solve the riddle! Prizes for the top three finishers; plus, a prize raffle for all other participants. Keep up to five ducks. For ages 12 – 18.



[Pewabic: Detroit's Pottery](#)

Wednesday, June 25, 7 p.m.

Registration is required. Take a look into the 122-year history of Detroit's iconic pottery studio. Working out of their National Historic Landmark studio on Detroit's east side, Pewabic craftspeople preserve a tradition that has enriched lives for generations. The presentation includes rare images from the Pewabic archives.

[Houseplant and Seed Swap](#)

Saturday, June 28, 2 p.m. – 3 p.m.

Registration is required. Bring your saved seeds, healthy plants rooted in dirt, or loose cuttings, and be ready to trade with others.



[Sitcom Showdown:](#)

[Family TV Trivia!](#)

Monday, June 30, 6 p.m. – 8 p.m.

Registration is required. Do you know the Conners from the Tanners? *Family Matters* from *Family Ties*? Test your knowledge! No team? No worries! Staff will place you on a team of two to eight people for a competition that's all laughs. For ages 18 and up.

Summer Youth Programs



Outdoor Summer Family Story Times

Thursday, June 19, 11 a.m.

Wednesday, June 25, 11 a.m.

Wednesday, July 2, 11 a.m.

No registration is required. Join us outside for an all-ages family story time on the Youth Terrace with stories, songs, rhymes, movement, and more. In the case of inclement weather, Story Time will be held inside.

Music at the Blissful Family Concert

Friday, June 20, 4:30 p.m. – 5:30 pm

No registration is required. National touring musician Music at the Blissful (Evan Haller) will present a fun-filled, interactive, movement-packed music experience for the whole family. Come join the fun as we sing, jump, shake, laugh, and go slow and fast with Music at the Blissful. This is sure to be an action-packed good time for all.



Pokémon Party

Tuesday, June 24, 2 p.m. – 4 p.m.

Registration is required. Young Pokémon fans ages 7 and up are invited to drop in to swap Pokémon cards, play Pokémon against others, and try their hand at Pokémon trivia.

Preschool Process Art

Thursday, June 26, 10 a.m. – 12 noon

No registration is required. Little artists ages 3 – 6, along with their grownup, can explore a variety of open-ended art materials in this drop-in program. From paint, to collage, to simple sculptures, the choice is yours!

Summer Family Movie Marathon

Monday, June 30, 11 a.m. – 4 p.m.

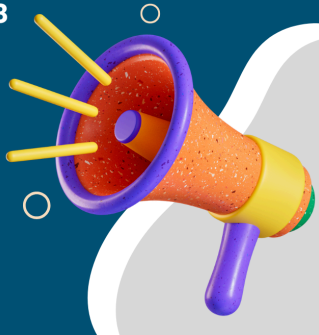
Clifford the Big Red Dog, Harold and the Purple Crayon, and Turning Red

No registration is required. Bring a blanket and cozy up at the Library for themed movie marathons. Popcorn and water provided, but nut-free snacks are welcome.

WANT TO VOLUNTEER?

APPLY NOW TO BE A TEEN VOLUNTEER

- Must be 14 – 18 years old
- Attend High School as of Fall 2025
- Live or attend school within Bloomfield Township



If you are between the ages of 14 – 18 would you like to **volunteer in the Youth Services Department this summer**? All students who will be in high school in the fall of 2025, and who live or attend school within Bloomfield Township, are encouraged to apply by filling out a [Teen Volunteer Application](#). Note that you must have a work permit on file to volunteer. Bloomfield Hills High School students can visit bhhs.bloomfield.org/students/student-employment for permit information; for other schools, please contact your administrative office. For questions or more information, email AskYouth@btpl.org.

UPCOMING EVENTS



Visit our [Calendar of Events](#) for upcoming programs at the Library including:

- [Fiber Arts Club](#), every month on the first and third Tuesday, 10 a.m. – 12 noon
- [NEW Visual Arts Club](#), every month on the third Wednesday, 10 a.m. – 12 noon, and the third Thursday, 6 p.m. – 8 p.m.
- [Tots and Friends Playtime](#), Fridays, 10 a.m. – 12 noon, beginning Friday, June 20
- [Science Fiction/Fantasy Book Club](#) – *The Jinn-bot of Shantiport* by Samit Basu, Tuesday, June 24, 7 p.m.
- [“Fade to Black” Romance/Romantasy Book Club](#) – *Lavash at First Sight* by Taleen Voskuni, Friday, June 27, 4 p.m.
- [Computer and Internet Basics](#), Monday, July 7, 5:30 p.m.





ARTISTIC ENCOUNTERS



Bloomfield Township Public Library is pleased to partner with the Great Lakes Chamber Music Festival for three free events this year. The Catherine Filene Shouse Chamber Music Institute, led by Philip Setzer, provides a platform for emerging professional ensembles. Artistic Encounters are public coachings for Shouse Institute fellows in a setting similar to a masterclass. You are invited to attend these Artistic Encounters to get a behind-the-scenes look at what it takes to be a professional musician. *Sponsored by Barbara Solms.*

- **Monday, June 9, 11 a.m.,** Artistic Encounter with Philip Setzer
- **Wednesday, June 11, 11 a.m.,** Artistic Encounter with Jennifer Frautschi and Third Coast Percussion
- **Monday, June 16, 11 a.m.,** Artistic Encounter with Gilles Vonsattel

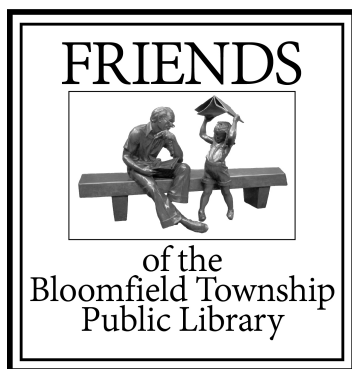
Please visit greatlakeschambermusic.org/venue/bloomfield-township-public-library/ for more information or to register for these events.

Go on an Adventure with the Library Explorers Challenge



Explore neighboring communities and discover the innovative services libraries offer! This is a fun way to get out of the house and learn all of the new and creative ways libraries are serving their communities.

How many libraries can you visit this summer? Collect three stamps to receive a [Library Explorers Challenge](#) sticker. Collect all six stamps to be entered in a raffle to win one of three \$50 gift cards to Schuler Books. Show your passport at the Adult and Teen Services or Youth Services Desk at Bloomfield Township Public Library on or before Monday, August 18 to collect your sticker and enter the raffle.



Friends of the Library

The Friends of the Library will hold their next **Second Saturday Sale**, Saturday, June 14, from 11 a.m. – 3 p.m., with a members-only sale period from 10 a.m. – 11 a.m. ([memberships available](#) at the door). Bring a bag or box for your purchase. Donations are also being accepted in the Book Donation Room on the west end of the building during the Library's open hours. For the most up-to-date Friends information, please visit the [library's website](#), or the Friend's [Facebook](#) or [Instagram](#) pages.

Library Hours

Mon. - Thurs.: 9:30 a.m. - 9 p.m.
Friday: 9:30 a.m. - 6:30 p.m.
Saturday: 9:30 a.m. - 5:30 p.m.
Sunday: Noon - 5:30 p.m.

Holiday Closings

The Library will be closed Friday, July 4, in observance of Independence Day.

Library Board

Keith Carduner
Danielle Gillman
Judy Lindstrom
Joan Luksik
Joy Murray
Shane Spradlin



Bloomfield Township Public Library
1099 Lone Pine Road
Bloomfield Township, MI 48302
Phone: (248) 642-5800
www.btpl.org